



CANYON-OWYHEE SCHOOL SERVICE AGENCY  
109 Penny Lane  
Wilder, ID 83676  
Phone (208) 482-6074  
Fax (208) 482-7904

---

# COSSA



# Instructional Procedures Manual

Effective: April 19, 2021

*Canyon-Owyhee School Service Agency (COSSA) is a public school cooperative serving the special education, career-technical, and alternative education needs of students from Homedale, Marsing, Notus, Parma, and Wilder School Districts.*

## Table of Contents

Table of Contents	2
Manual Purpose and CRTEC's Guiding Educational Principles	3
Master Course Schedule	4
Standards and Curriculum Alignment	5
Student Performance Standards	7
Student Data Analysis	8
Proper Placement - STAR Renaissance Testing	10
Advisory	11
Early Warning System (EWS), Response to Intervention (Rtl), Remediation	12
Rtl Basic Beliefs	12
Rtl Referral Form	13
Multi-Tiered System of Support Forms	14
Rtl Student Placement Flowchart	16
Tier 3 Student Evaluation Team Membership	17
Special Education Student Support	
Specific Teaching Aids	
Writing Standard	18
Formative Assessment Plan	20
Credit Appeal Decision Matrix	21
Online Education	22

## **Purpose of the Instructional Procedures Manual**

The CRTEC Instructional Procedures Manual has one overriding purpose: standardization of common educational forms and processes so all CRTEC teachers are not wasting time developing the forms and processes already agreed upon by the staff. The manual is not meant to reduce academic freedom, rather to free teachers from having to develop their own forms and processes.

## **CRTEC's Guiding Educational Principles**

1. Student learning and student safety is the focus of every CRTEC staff member.
2. Staff are aware and alert to adverse childhood experiences our students face, and remain trauma-sensitive in every student interaction.
3. Proper placement helps ensure student success. Students will be placed into grade-level classes based on their ability to succeed in that class, as determined by placement testing and record review. Testing and record review occur PRIOR to enrollment in class. Placement is based on performance on an exam, whether a standardized test or a specific placement test. COSSA Academy currently uses the Renaissance STAR test to determine grade-level equivalency. No student is placed into a class until the placement process is complete.
4. Escalating "help" is in place for students through the multi-tiered system of academic support (MTSS). Intervention and remediation efforts are part of the MTSS.
5. Teachers participate in a collaborative meeting once per week to talk about student performance and ways to ensure student academic success. Intervention and remediation efforts for struggling students are the main topics during this meeting.
6. Competency-based placement means students will be able to "challenge" face to face classes by taking the End of Course (EOC) exam. If they score 80% or higher, they will not have to take that class and will receive credit for that class.
7. Disciplinary actions take into account restorative justice principals and trauma-sensitive best practices.

## Master Course Schedule

Every effort will be made to create a four-year master course schedule and then to adhere to that schedule of courses. This will ensure that teachers have adequate time to plan for courses that are coming up in their schedule.

1. In creating a master course schedule, some courses stand-alone, and some must occur sequentially. Examples:

Must have "A" before "B"

Math  
Science  
History

"B" not dependent on "A"

English 9  
English 10  
English 11  
English 12

2. The sequence of math courses in ascending order for scheduling is:

6-8 Algebra for Junior High  
6-8 Geometry for Junior High  
Algebra Essentials for high school students who are not ready for Algebra I  
Algebra I  
Geometry

## Standards and Curriculum Alignment

### Standards Alignment Vision:

1. COSSA will adopt standards-based grading and reporting.
2. All course-related documents will be aligned to the Idaho Core Standards:
  - Curriculum, scope & sequence, syllabi
  - Assessments
  - Instruction
  - Rtl/Remediation
  - Report Cards/Reports to Parents

### Specifically:

1. All basic documents contains standards. Basic documents include: Idaho Core Standards, Idaho Science Standards, CTE Competencies (SkillStack), etc.
2. From the basic documents we create COSSA Standards, which funnel down (reduce) the total number of standards to a manageable level for alternative/CTE students.
3. COSSA Standards become curriculum (“a student will be able to ...”), which becomes syllabi and scope & sequence, which become lesson plans, which leads to assessments. Unless you follow the “backwards by design” method, which jumps to assessments and works backward through lessons to scope & sequence to curriculum.
3. Report cards/discussions with parents.
  - First – begin by referencing standards in all progress discussion
  - Goal – basing progress on standards (standards-based report cards)

### Curriculum Alignment:

1. Curriculum alignment between similar courses taught by different teachers occurs during standards alignment. Divide and conquer, and then share with each other.
2. Alignment includes creating a common EOQ.
3. Alignment will occur for all “core classes”, as defined below:

**Core Classes:** Junior High and High School specific classes required for graduation. These will include:

**Junior High:**

1. JH English
2. JH Math
3. JH Social Studies
4. JH Science

**High School:****English Department**

1. 9<sup>th</sup> grade English
2. 10<sup>th</sup> grade English
3. 11<sup>th</sup> grade English
4. 12<sup>th</sup> grade English
5. Speech

**Math Department**

1. Algebra 1
2. Geometry

**Social Studies**

1. U.S. History
2. Government
3. Economics

**Health****Sciences**

1. Earth Science
2. Biology

## Student Performance Standards

### 1. Acceptable Levels of Student Performance for “Growth”:

a. Growth: measured by the difference in the score on pre- and post-tests in a quarter-long course.

b. Growth Measure: the change in the percentage of correctly answered questions or performed skills, expressed in “percentage gain”.

For example: A student scores 20% on the pre-test and 40% on the post-test. The “change” is 20%.

c. Acceptable growth: 30%.

### 2. Acceptable Level of Student Performance for “Proficiency” at a standard:

a. Proficiency: measured as the percentage of the assessments and/or questions related to a specific (individual) standard that must be correct for a student to be considered proficient at that standard.

b. Acceptable Proficiency: 60%.

For example: Standard E9.2.3 has 5 related questions on the EOQ. A student correctly answers 3 of the 5.  $3/5 = 60\%$ . Therefore, the student has “passed” (is proficient at) Standard E9.2.3.

### 3. Acceptable Level of Student Performance for “Proficiency” at an EOQ:

a. Proficiency: measured as the percentage of the standards that we consider “essential” (all “COSSA Standards” for this course) at which a student must be proficient, for a student to be considered eligible to move to the next level of this subject.

b. Acceptable Proficiency: 70%.

For example: The Biology “A” course has 20 essential standards, and each standard has 5 questions on the EOQ. A student achieves “proficient” [answering correctly a minimum of 3 out of 5 questions per standard] on 15 of the 20 essential standards.  $15/20 = 75\%$ . Therefore, the student’s performance allows him/her to advance to the Biology “B” course.

## Student Data Analysis

1. There are three levels of continuous improvement team (CIT) planning:

- Level I - COSSA-Wide CIT
- Level II – CRTEC, specifically CTE, CIT
- Level III – COSSA Academy CIT

Student data is analyzed in COSSA Academy and the CRTEC CITs. COSSA Academy CIT analyzes Academy student data:

- a. Membership: all Academy teachers, data team, Admin.
- b. Data to review: Student performance and growth (pre- & post-, EOQs, measures in the strategic plan).
- c. Planning: Efforts to improve student performance and growth.

CRTEC CIT analyzes CTE student data:

- a. Membership: all CRTEC CTE teachers, data team, Admin.
- b. Data to review: student participation and student performance on Workplace Readiness Assessment (WRA) and Technical Skills Assessment (TSA) by program area.
- c. Planning: Efforts to improve student participation percentage and student performance percentage.

2. Teachers are evaluated on both student growth and performance, so the CITs can help identify areas of improvement for teachers. In addition, COSSA believes in and supports the “reflective teacher” model, in which teachers review their individual student data and make decisions to change their teaching strategies in order to improve student growth and performance. Teachers review their individual data reports prepared by the data team, make decisions on changes they will make in their instructional practice, and then record those changes directly onto the data report before filing that data report.

3. COSSA Academy CIT Plan is to measure at the following frequency:

- a. Strategic Plan items – annually
- b. EOQ – quarterly
- c. Pre- and post-tests – quarterly

4. CRTEC CIT Plan is to measure at the following frequency:



a. WRA – annually

b. TSA – annually

5. Unusual and infrequent data issues include students assigned Incomplete (“I”) grades, and teachers missing due dates to provide student data. These issues will be handled as follows:

a. Students with Incomplete grades.

(1) Students have a maximum of one quarter (until the end of the next complete quarter) to finish incomplete work from a quarter. After that, the student will receive whatever grade he/she has earned to-date.

(2) When the student’s final grade is determined (either when the student actually finishes or at the end of the next quarter), the teacher will report that data to the data team. The data team will make one “corrective report” on the previous quarter’s data, adding in the previous incomplete (now final) grades, at the end of the following quarter. The updated report will be distributed and filed, but will not reanalyzed by the CIT unless there are significant changes to teacher growth and performance data.

b. Teachers with missing data at a due date.

(1) Teachers who miss normal due dates for data have until the end of the next quarter to turn in that data to the data team.

(2) The data team will make one “corrective report” on the previous quarter’s data, adding in the previously missing data, at the end of the following quarter. The updated report will be distributed and filed, but will not reanalyzed by the CIT unless there are significant changes to teacher growth and performance data.

## **Proper Placement – STAR Renaissance Testing**

### STAR Testing

COSSA Academy uses the Renaissance STAR math and reading tests to determine grade-level-equivalence for all students who enter COSSA Academy. Testing occurs for all students three times per year – beginning of year, end of first semester, and end of second semester. Students new to COSSA Academy are tested shortly after admission. Some students who are very low in grade-level-equivalence may be tested more often to assess the effectiveness of intervention strategies.

### STAR Incentives

Students will be positively incentivized to perform to their best on the STAR tests.

1. Incentivize student effort on STAR test.
2. Incentivize grade level equivalence OR scaled score positive movement.
3. Students assume ownership of their score.
4. Administration consistently schedules test, frequently.

## Advisory Periods

COSSA Academy has one advisory period in each school day:

10 minutes at the beginning of the day.

The primary purpose of the morning advisory period is to allow Advisors to quickly check-in with students on their physical and mental health. This “early warning” of a student having a difficult day may allow counselors or others in the school to lower the student’s anxiety or other issue that will prevent that student from learning.

In addition, short lessons on various topics such as anti-bullying, or topical discussions on current events or holiday themes, may be undertaken.

### Vision of “best use” of Advisory time:

1. Relationship building. Get to the point where the Advisor understands not just what is happening, but why. Advisor is an advocate for the student. Example:

Monday teachers’ meeting:                      focus on academics and behavior,  
but student’s advisor gives input/insight

2. Soft skills: work ethic, attitude, communication skills, problem solving – a lot like the “Success Class”. “Sharpen the saw” on skills developed in the Success Class.

3. Grade checks, wellness check-in, STAR grade equivalency discussion.

4. Goal setting: define goals, understand goals, set goals:

- Academic
- Personal/behavior

5. Students stay with same advisor long-term to develop relationship

6. New students are placed into Advisory with a teacher with whom they have at least one class.

## **Early Warning System (EWS), Response to Intervention (Rtl), Remediation**

### **Rtl Basic Beliefs:**

Core instruction continues, then supplement with remediation.

The most experienced teachers should work with the neediest students.

## Rtl Referral Form

Date: \_\_\_\_\_

Student Name: \_\_\_\_\_

GLE Reading: \_\_\_\_\_ GLE Math: \_\_\_\_\_  
[Below 4<sup>th</sup> grade = remediation plan versus regular classes]

- Meeting between Principal, Counselor, Parents, Student
  
- Remediation Courses Assigned: \_\_\_\_\_  
\_\_\_\_\_  
\_\_\_\_\_

Advisor: \_\_\_\_\_  
[What is going on behind the scenes?] \_\_\_\_\_  
\_\_\_\_\_

### Early Warning System:

- Attendance \_\_\_\_\_
- Behavior \_\_\_\_\_
- Grades:
  - Assignments \_\_\_\_\_
  - Formative \_\_\_\_\_
  - Quizzes \_\_\_\_\_
  - Tests \_\_\_\_\_

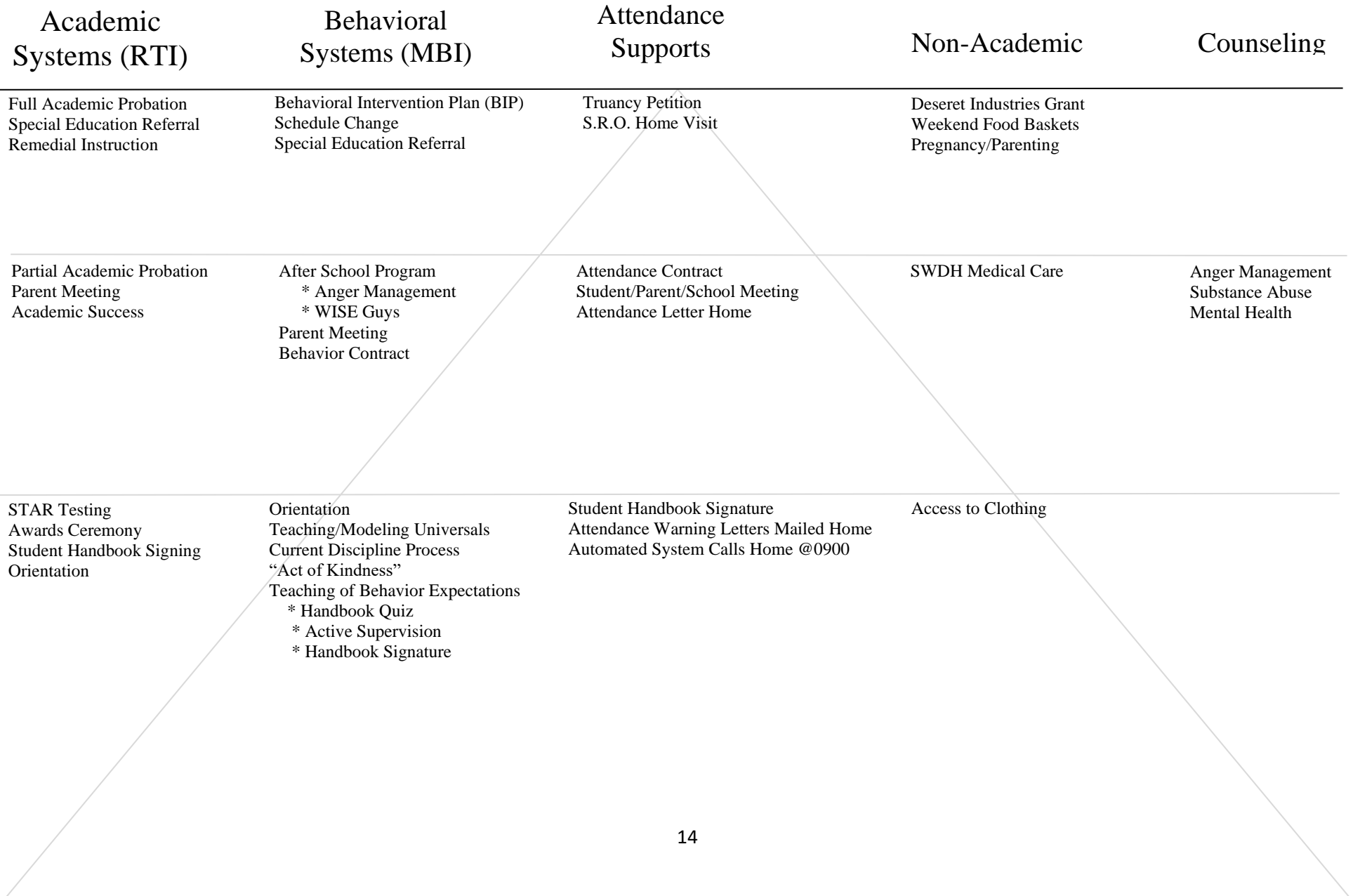
### Remediation:

- Academic Success \_\_\_\_\_
- Academic Probation \_\_\_\_\_
- In-class Diversity:
  - Different Assessment \_\_\_\_\_
  - One-on-one \_\_\_\_\_
  - Preferential Seating \_\_\_\_\_
  - Questions Read \_\_\_\_\_
- Testing for Special Needs \_\_\_\_\_
- Full Academic Probation \_\_\_\_\_

### Counseling:

- Substance \_\_\_\_\_
- Anger \_\_\_\_\_
- Mental Health \_\_\_\_\_
- Pregnancy/Parenting \_\_\_\_\_
- SWDH \_\_\_\_\_

# COSSA Academy Multi-Tiered Systems of Support

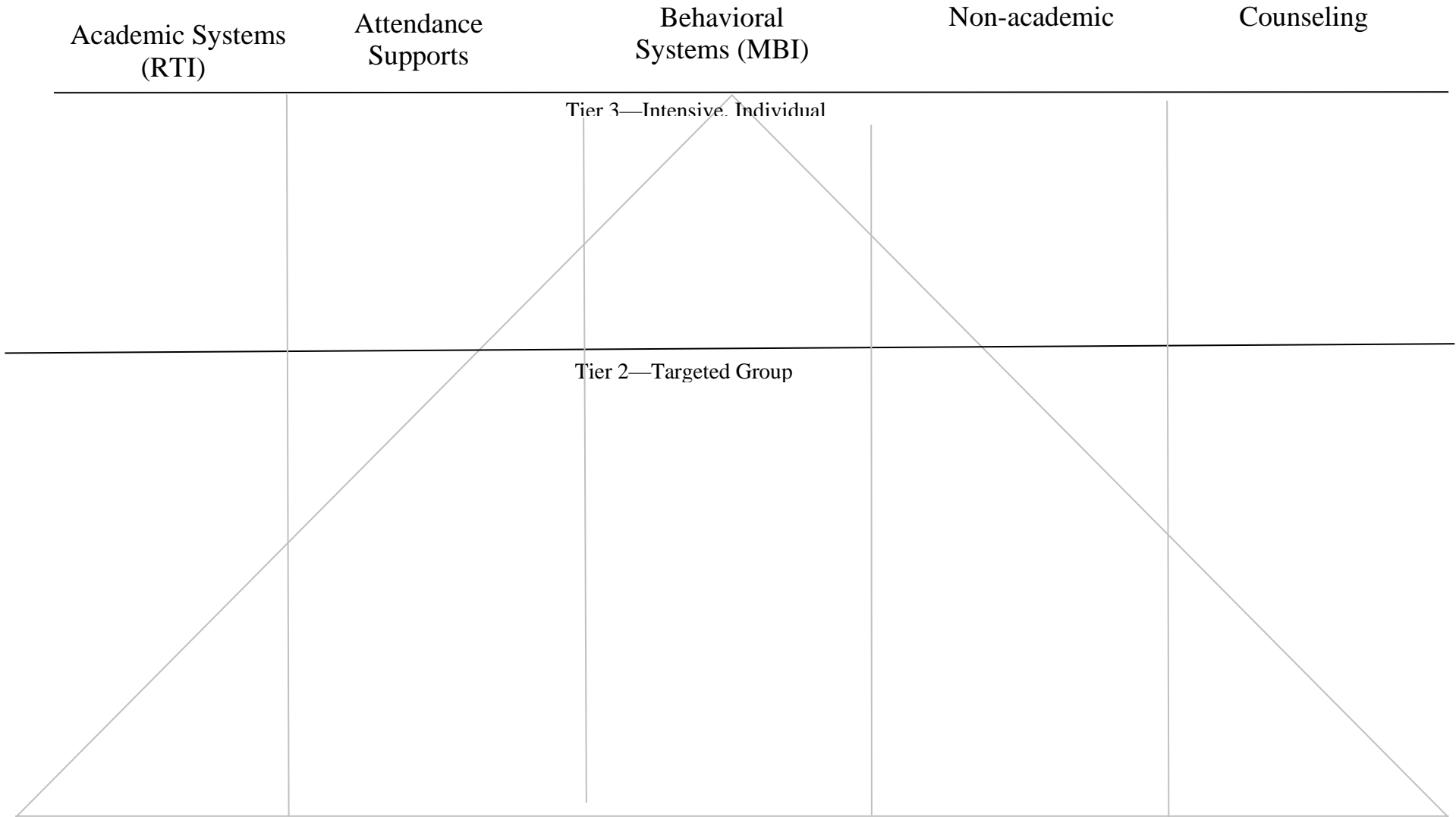


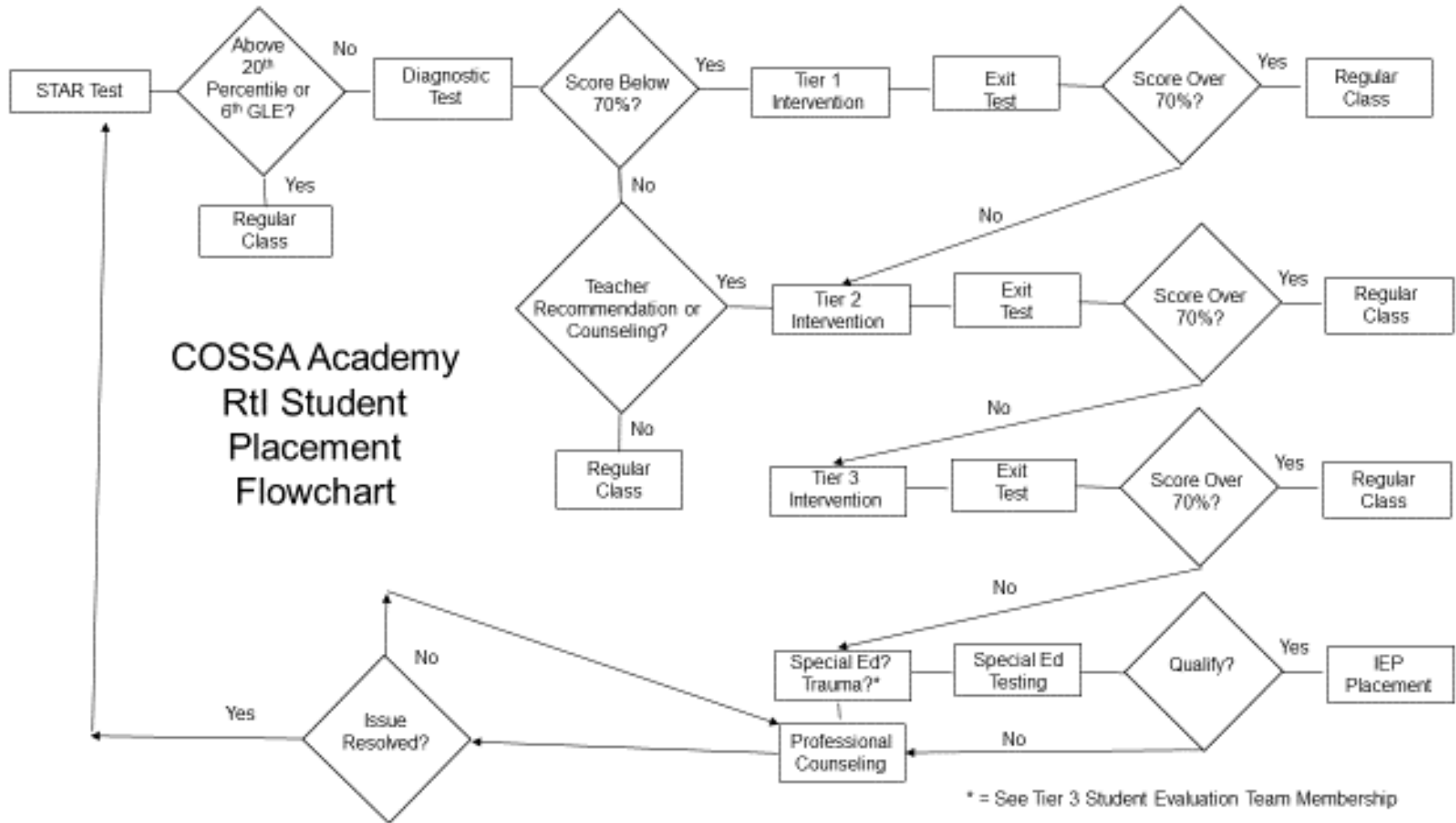
STUDENT:

Date: \_\_\_\_\_

Concern:

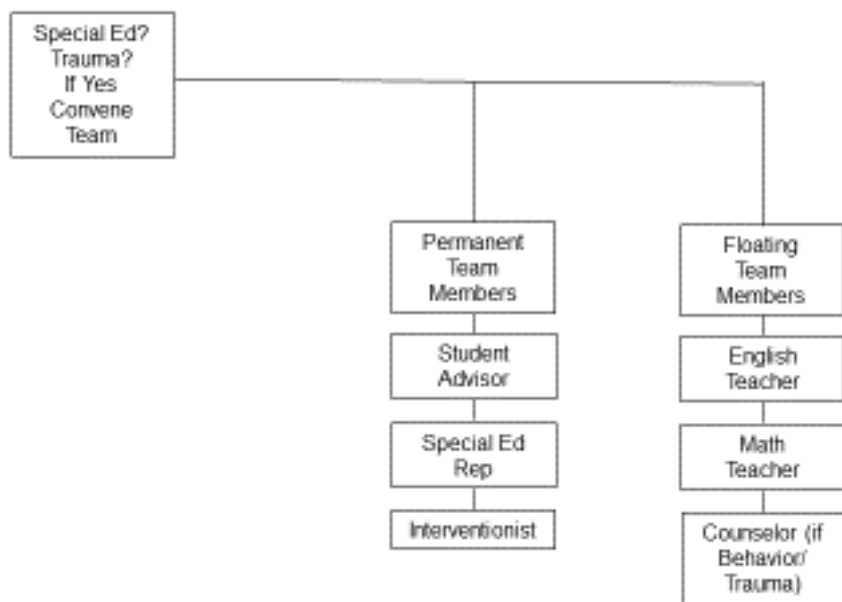
What We Know:







### Tier 3 Student Evaluation Team Membership



## **Special Education Student Supports**

**Special education students enrolled in COSSA Academy regular education courses will receive all the accommodations required by their Individualized Education Plan (IEP). However, COSSA Academy does not have any special education resource teachers, and care must be taken by regular education teachers to ensure that they understand student accommodations and provide them.**

## COSSA Writing Standard

### Standard English

- No text talk.
  - I don't like what you are doing
  - I dnt like what ur doin
- Appropriate voice/tone
- Avoid jargon

### Punctuation

- End of sentences
  - period . question mark ? exclamation point !
- Proper comma use
  - Complex sentence, compound sentence, list, dialogue

### Paragraphs

- Indent
- 4 or more sentences
- 1 idea per

### Complete Sentences

- Capital letter to begin
- Subject and predicate (main clause = complete thought)
- Correct punctuation to end

Verb = expresses action, condition, or state of being

Predicate = what the subject is, does, or has

---

### Simple:

The dogs eat Cheerios.

My mom and dad hugged the baby.

The boy ran and swept the floor.

Bluebirds and owls really love to hunt and nest differently.

### Complex Sentence:

While I walked to the store, I tripped over the sidewalk.

When brightly lit the lamp sheds a warm glow.

### Compound Sentence:

He lost the green glove, but someone found it yesterday.

I learned that yellow cats love to scratch yarn and play with bells.

The office and computer labs were filled with the scent of the flowers in bloom and dust in the air.

**Compound-Complex Sentence:**

As I wrote the letter, the ink fell on the paper, and the stain covered the words.

As I wrote the letter, the ink fell on the paper and covered the words.

Complete Sentence +FANBOYS Complete Sentence  
Subject blah blah predicate blah, FANBOYS subject blah predicate blah.

For / And / Nor / But / Or / Yet / So

**Commas in lists:**

Joey wants me to buy eggs, milk, and juice at the grocery store.

The dog ran, jumped, and landed in the swimming pool

## **Formative Assessment**

CRTEC uses "exit tickets" as the CRTEC standard formative assessment. This includes CTE as well as COSSA Academy courses.

### **1. Definition of formative assessment:**

Methods that teachers use to conduct in-process evaluations of student comprehension, learning needs, and academic progress during a lesson, unit, or course.

### **2. "Purpose" of formative assessments:**

Formative assessments help teachers identify concepts that students are struggling to understand, skills they are having difficulty acquiring, or learning standards they have not yet achieved, so that adjustments can be made to lessons, instructional techniques, and academic support.

### **3. Definition of exit tickets:**

Brief assignments, short quizzes, or simple tasks, that quickly collect student responses to a teacher's questions at the end of a lesson or class period.

### **4. "Purpose" of exit tickets:**

Based on what the exit ticket responses indicate, the teacher can modify the next lesson to address concepts that students have failed to comprehend or skills they have not yet mastered.

### **5. Applicability:**

"Exit tickets" can be used in almost every class or program taught within COSSA Academy and the Career & Technical School. Exit tickets will not look the same for every area, but the need to establish whether or not you need to re-teach a subject is universal. Exit tickets need not be used every day. They may more properly be used at the end of a unit. Again - how their use looks depends on your class, the structure of your learning environment, etc.

### Credit Appeal Decision Matrix

Number of Absences	4 – 8	9 – 12	13 or more
Normal Decision – Teacher Influence	Approved unless teacher strenuously objects	Teacher has a great deal of influence	Will not be approved unless teacher lobbies very hard

## Online Education

### Online Courses in COSSA Academy

1. COSSA Academy students will normally receive instruction face-to-face with their teachers. If a parent/student requests the student be enrolled in online classes within COSSA Academy, the student's ability to succeed with online classes must be determined. Factors such as entering grade as determined by earned/transcript credits, and the student's STAR Grade Level Equivalent (GLE) score, are taken into account.

a. Online math classes:

- Grade 7 – 10, at-grade-level credits, Math GLE 5 or above – allow.
- Grade 7 – 10, below-grade level credits, or Math GLE <5 – do not allow.
- Grade 11 – 12, >25 credits, Math GLE 8 or above – allow.
- Grade 11 – 12, <25 credits, Math GLE <8 – do not allow.

b. Online English classes:

- Grade 7 – 10, at-grade-level credits, English GLE at the grade level of the last grade completed – allow.
- Grade 7 – 10, below-grade level credits, or English GLE below the grade level of the last grade completed – do not allow.
- Grade 11 – 12, >25 credits, English GLE at the grade level of the last grade completed – allow.
- Grade 11 – 12, <25 credits, or English GLE below the grade level of the last grade completed – do not allow.

c. Exceptions can be made on an individual basis with the approval of the subject-matter teacher and Principal.

### Option for Remote Delivery due to Illness/Homebound Student

1. If a parent/student requests the student be enrolled in online classes, and also requests that the student NOT attend COSSA Academy in-person, the student's ability to succeed with online classes without a facilitator must be determined. Factors such as entering grade as determined by earned/transcript credits, and the student's STAR Grade Level Equivalent (GLE) score, are taken into account. In addition, the amount of educational support at home is a significant factor.

a. Remote and Online math classes:

- Grade 7 – 10, at-grade-level credits, Math GLE 8 or above – allow.
- Grade 7 – 10, below-grade level credits, or Math GLE <8 – do not allow.
- Grade 11 – 12, >25 credits, Math GLE 9 or above – allow.
- Grade 11 – 12, <25 credits, Math GLE <9 – do not allow.

b. Online English classes:

Grade 7 – 10, at-grade-level credits, English GLE at the grade level of the last grade completed – allow.

Grade 7 – 10, below-grade level credits, or English GLE below the grade level of the last grade completed – do not allow.

Grade 11 – 12, >25 credits, English GLE at the grade level of the last grade completed – allow.

Grade 11 – 12, <25 credits, or English GLE below the grade level of the last grade completed – do not allow.

c. Exceptions can be made on an individual basis with the approval of the subject-matter teacher and Principal.

Students who arrive late in the Quarter

The COSSA Academy Student Handbook restricts students who enroll more than 5 days after the start of a new quarter to online classes. Students who arrive after the 5-day grace period will be informed of the credit/GLE requirements for online learning discussed above. A student who does not meet the requirements for placement onto online learning will be counseled to wait until the start of the next quarter to enroll. Parents/students who insist on the student enrolling will be advised that the student will only be placed into only one online class, until the student can prove that they can succeed at online learning. If the student successfully passes one online course, they will be enrolled in two online courses, and more courses will be added if the student continues to succeed. The student will be placed into face-to-face classes once a new quarter begins.